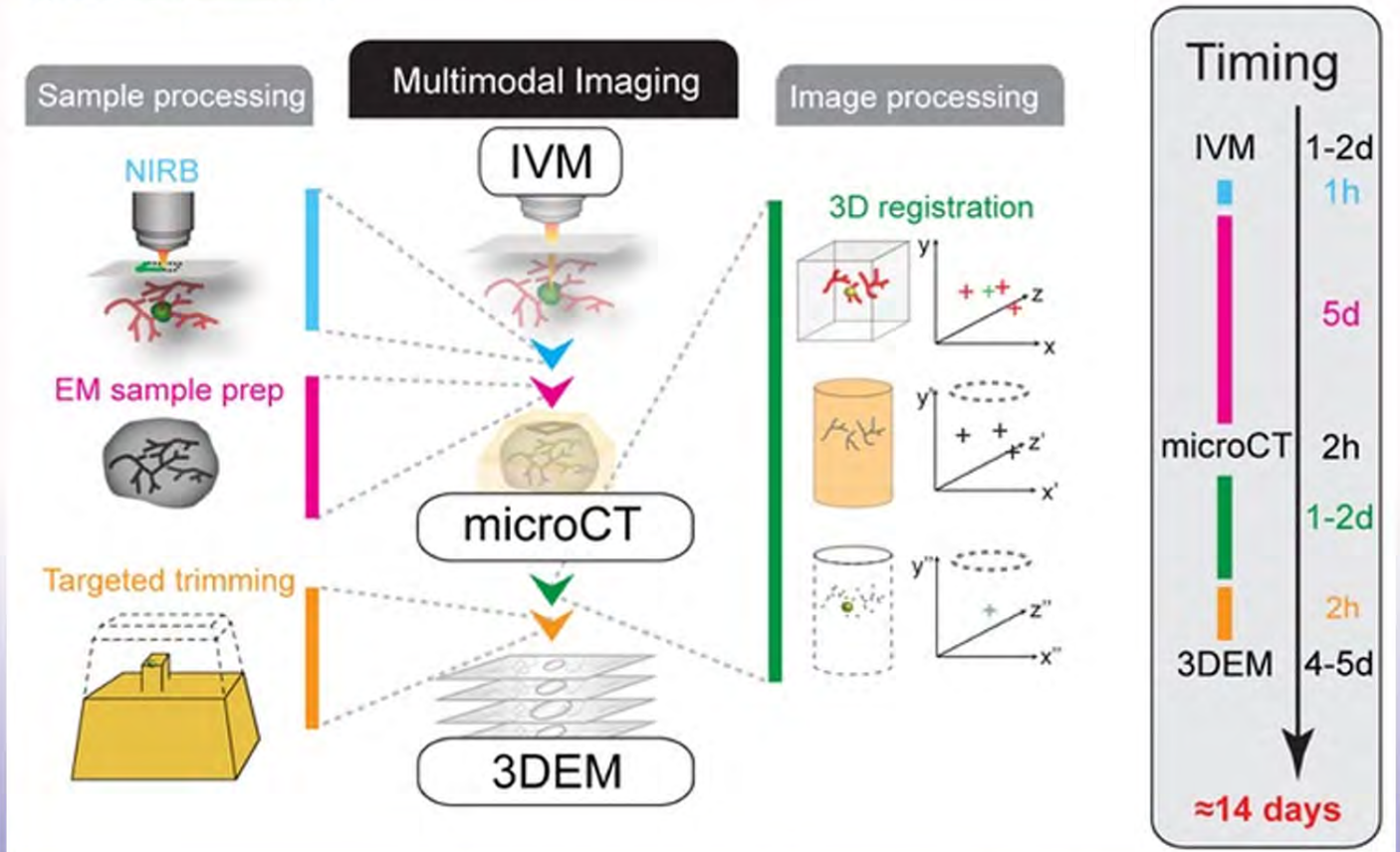


# Frontiers in Microscopy & Microanalysis

## Capturing rare cells in heterogeneous samples with Correlative Light & Electron Microscopy (CLEM)



**Dr. Yannick Schwab**  
 Cell Biology & Biophysics,  
 Director Electron Microscopy Facility  
 EMBL Heidelberg Germany



The University of Queensland

AIBN #75 Level 1 Seminar Room  
 24th July 2017 12pm - 1pm

