

# Life Science and Soft Matter Applications

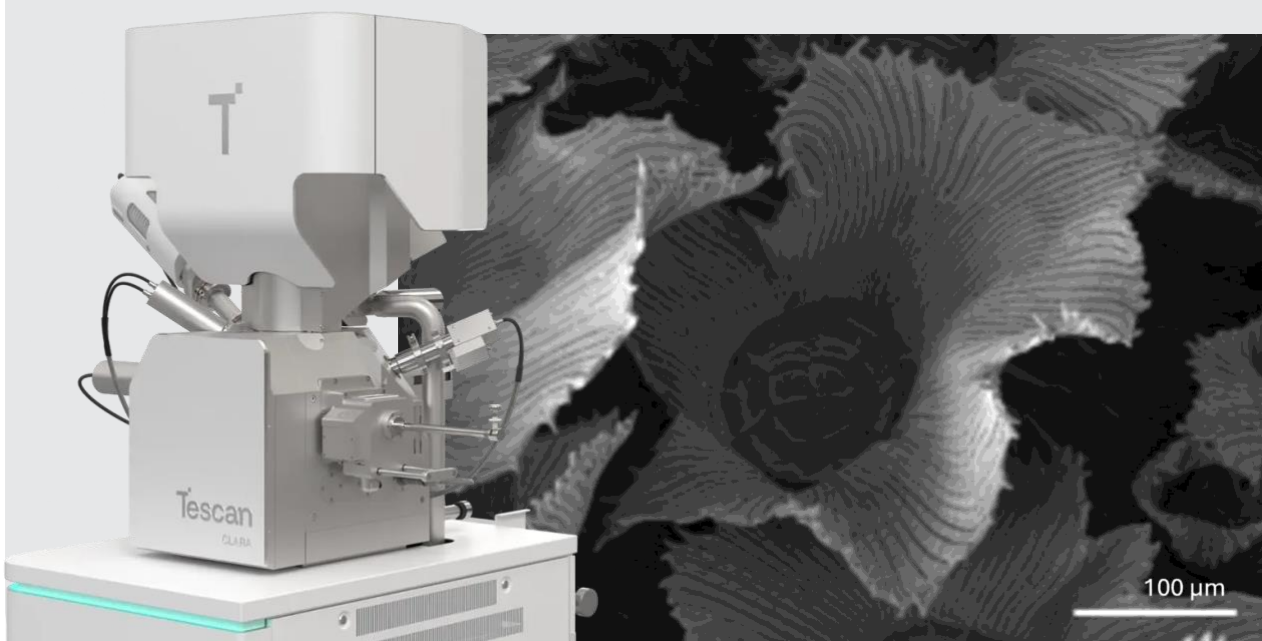
Date: 27<sup>th</sup> May 2026

Time: 03:00 PM to 4:00 PM

Email: [kamran.khajeypour@axt.com.au](mailto:kamran.khajeypour@axt.com.au)

We are pleased to invite you to an upcoming seminar on life science and soft matter applications of the TESCAN CLARA. The CLARA is an ultra-high resolution SEM designed to handle beam-sensitive materials at low landing energies, making it ideal for delicate biological samples.

The system can be equipped with software to support large-area CLEM workflows and array tomography, and when integrated with an ultramicrotome, it also enables serial block-face imaging (SBFI) applications – providing a versatile platform for advanced life science and soft matter research.



Presenter

**Jana Šmídová**

**TESCAN Life Science Product Marketing Manager**

Jana Šmídová is a SEM specialist at TESCAN with a focus on life science applications, particularly advanced electron microscopy workflows. Her work centers on developing and optimizing cryo-FIB-SEM techniques for structural biology, enabling high-resolution imaging of biological specimens and supporting reproducible sample preparation and 3D analysis for life science research.

**Tescan**