

Frontiers in Microscopy & Microanalysis

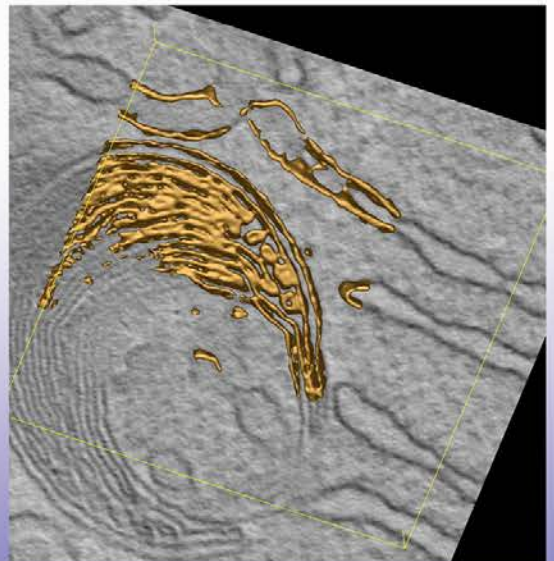
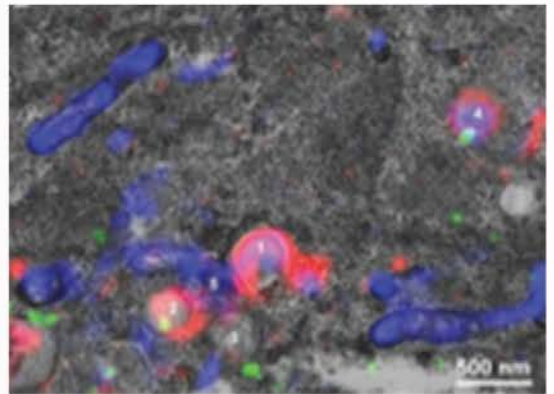
Autophagy and micronuclei integrity studied using electron tomography and STEM-tomography



Prof. Andreas Brech

Dept. of Mol. Cell Biology
Institute for Cancer Research
Oslo University Hospital - Radium Hospital
Oslo, Norway

We are studying a range of intracellular membrane dynamics comprising endocytic receptor traffic, cell division, micronuclei integrity and importantly the process of selective and non-selective autophagy. To study these processes, we employ a range of correlative light/electron microscopy approaches usually in combination with electron tomography or STEM-tomography.



The University of Queensland/CMM

AIBN Building 75 Level 1 Seminar Room

Zoom: <https://uqz.zoom.us/j/89597628239>

on Wednesday 12^h February 2025, 1:30-2:30pm (AEST)