

# Frontiers in Microscopy & Microanalysis

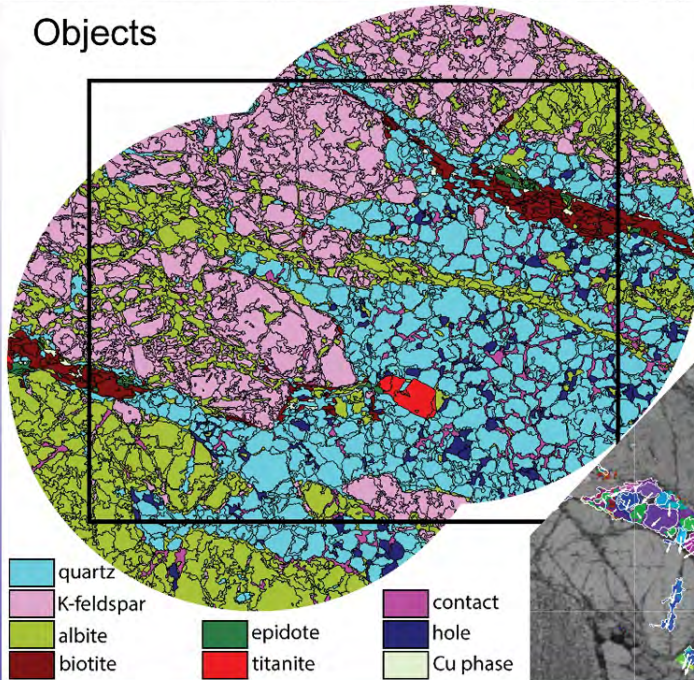
Correlative optical, SEM and XFM synchrotron  
microscopy for automated mineralogical phase maps

*by Dr Marco Acevedo and Prof Balz Kamber  
School of Earth and Atmospheric Sciences, QUT*

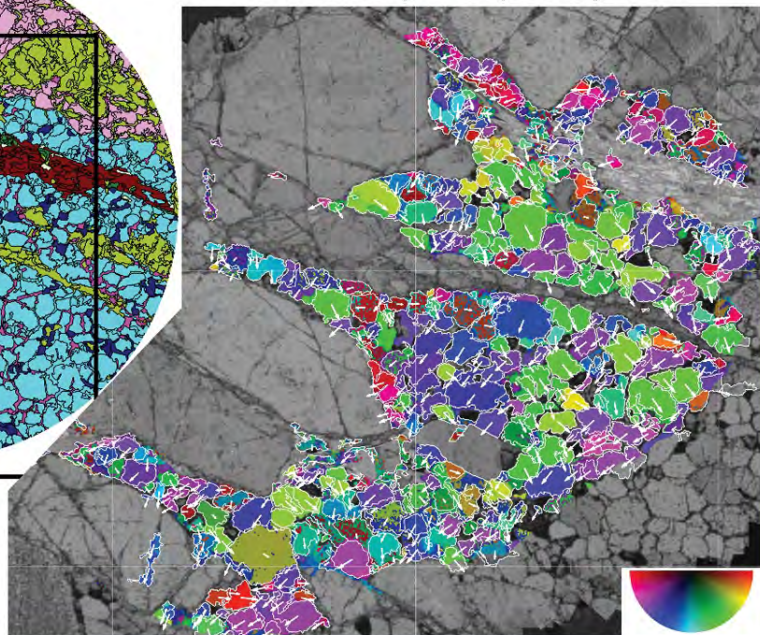
Mylonite 384D22 (background: XPL-75; overlay: XFM pca)



Objects



Orientation quiver plot: quartz



UQ St. Lucia; AIBN Bldg.75, Seminar Room Level 1

*on Wednesday 7th Aug 2024; 14:00-15:00*