

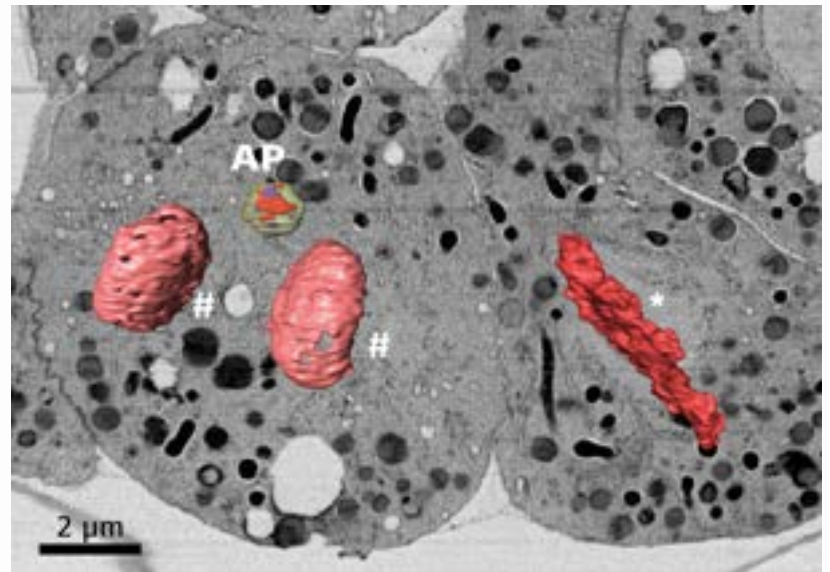
Frontiers in Microscopy & Microanalysis

CryoFIB-SEM volume imaging & CryoFIB-SEM TEM preparation for correlative microscopy



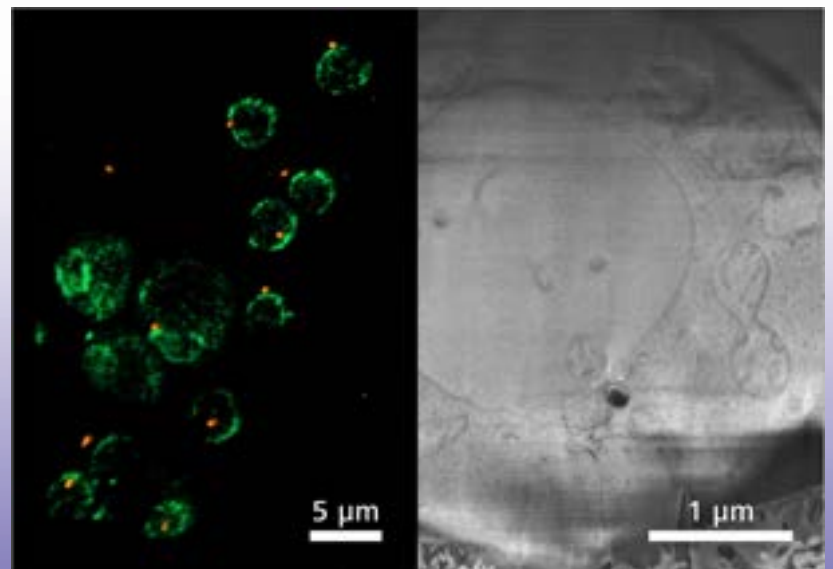
Andreas Schertel
Carl Zeiss AG

Andreas is joining us from Germany to share his expertise in all things focused ion beam scanning electron microscopy. He will highlight Zeiss cryoFIB-SEM solutions in life sciences.



Reconstruction of a cryoFIB-SEM volume from *C. elegans*

Correlative microscopy:
Overview image of yeast by LSM900 at low temperature (left) alongside specifically targeted cell by CryoFIB-SEM (right).



The University of Queensland/CMM & ZEISS

AIBN Building 75 Level 1 Seminar Room

Zoom: <https://uqz.zoom.us/j/81128801907>

on Friday 30th June 2023; 13:00-13:45 (AEST)

