

RockMaker: designing, scoring and analysing condition screening experiment outcomes

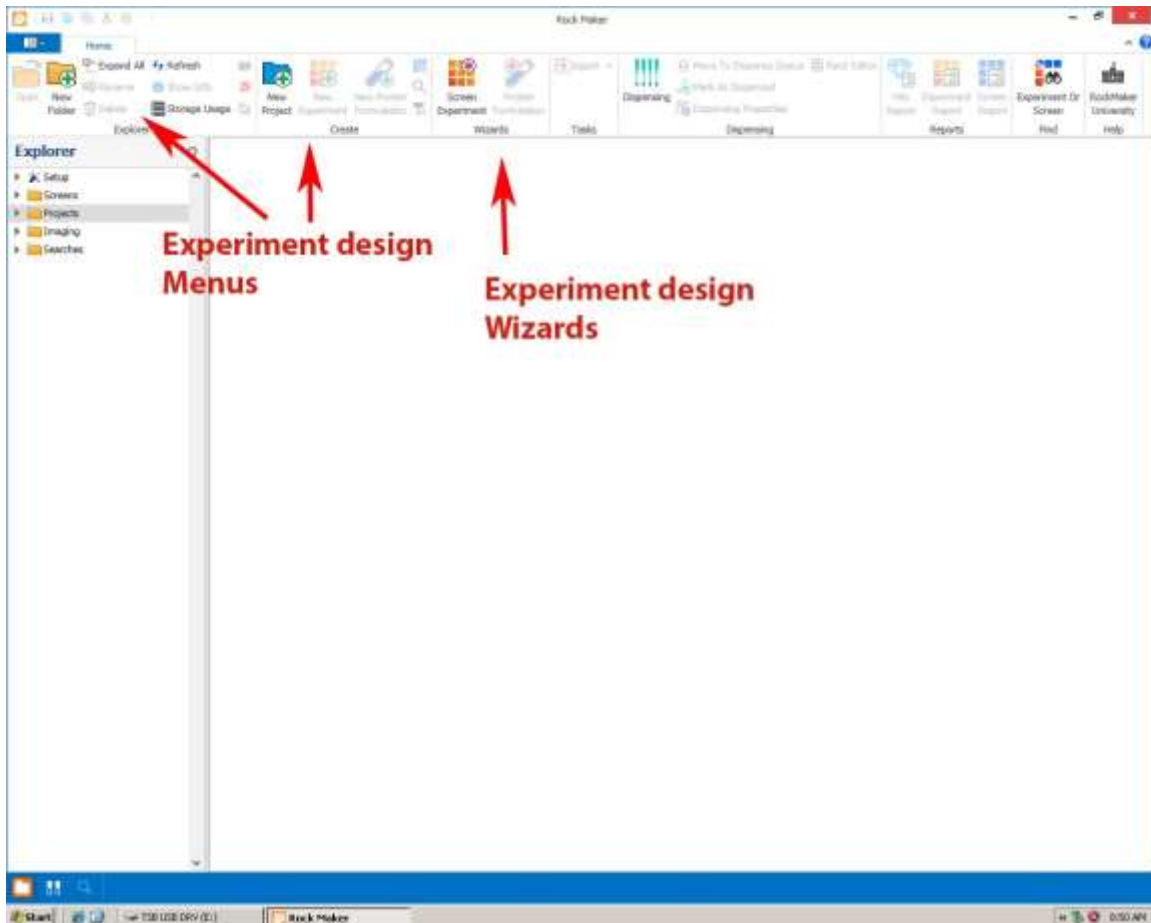
Designing an experiment

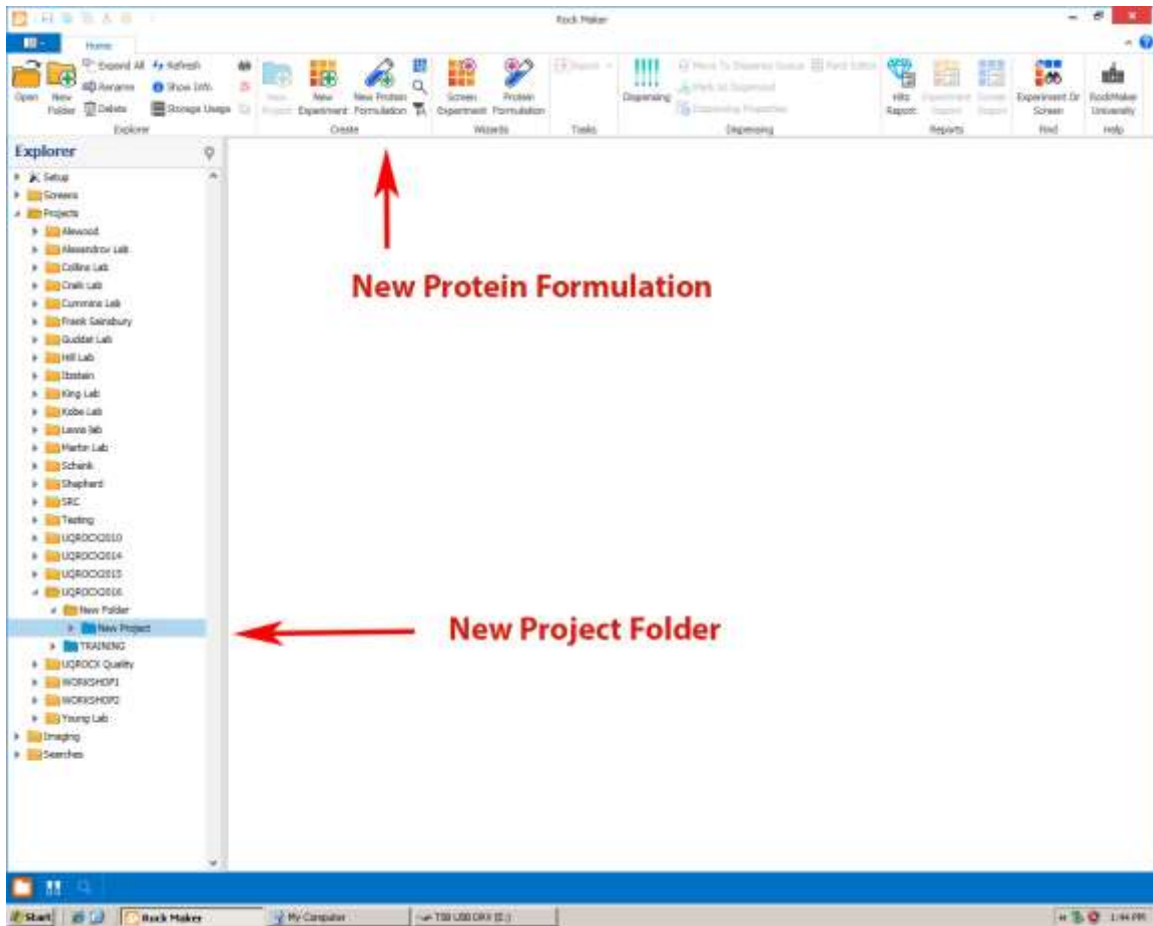
Open Rockmaker and go to the Explorer window and find your Group's name under Projects.

Make a **New Folder**

Within that folder make a **New Project**

Within that Project make a **New Protein Formulation**

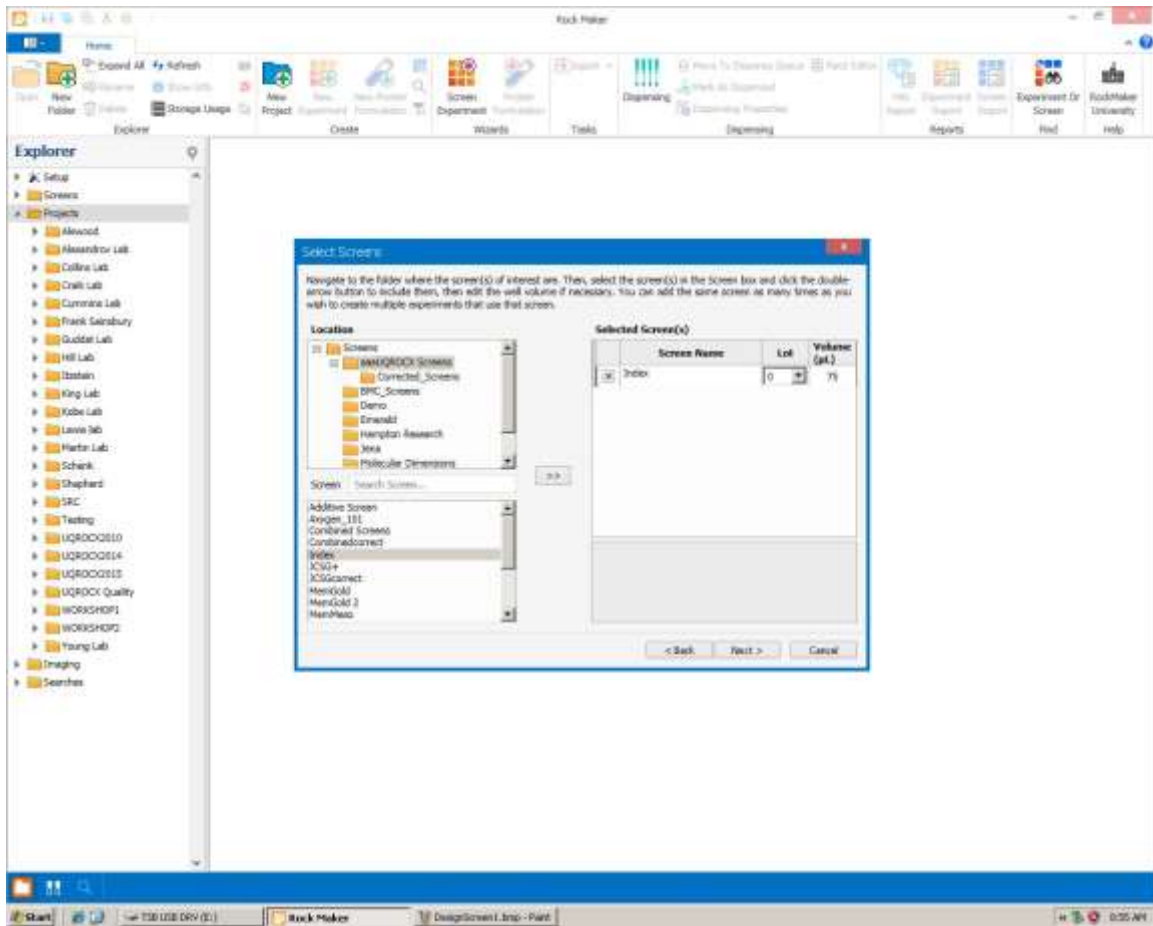




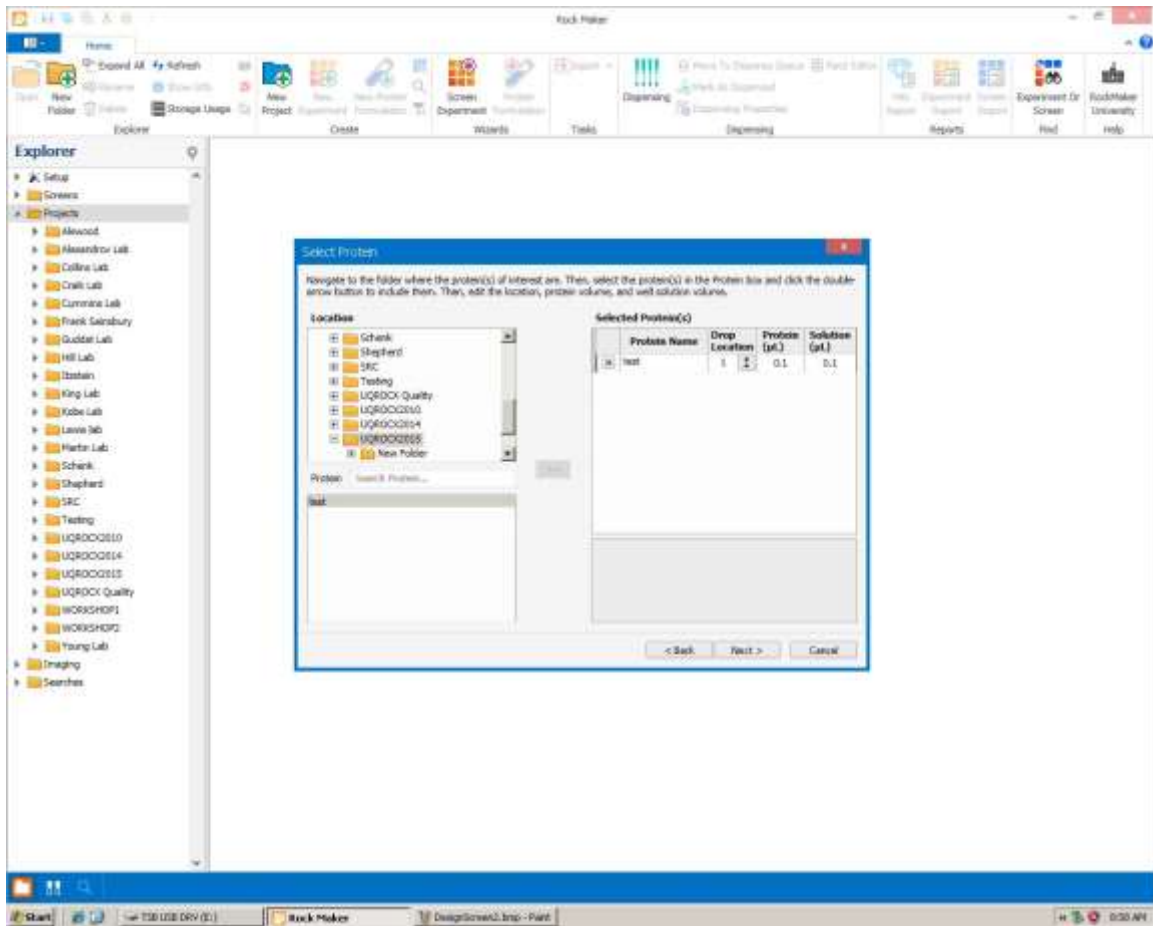
Use the Wizard to make one or more New Screen Experiments.

A screen experiment can also be constructed without the wizard. Within the Project use right click to select **experiment define the experiment on the tab** and drag and drop a screen and then a protein formulation on to the

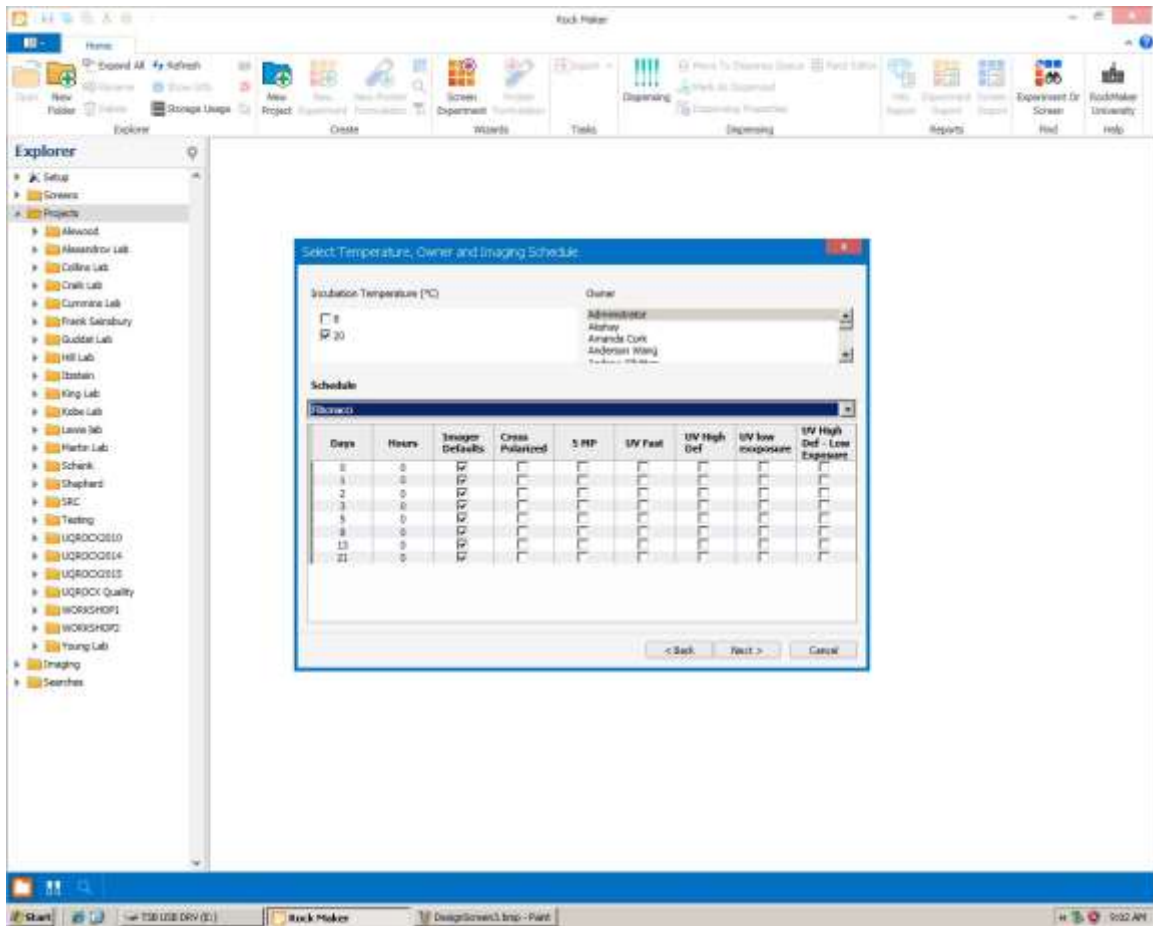
From the Screens /aaaUQROCX folder select the Screen you will be using.



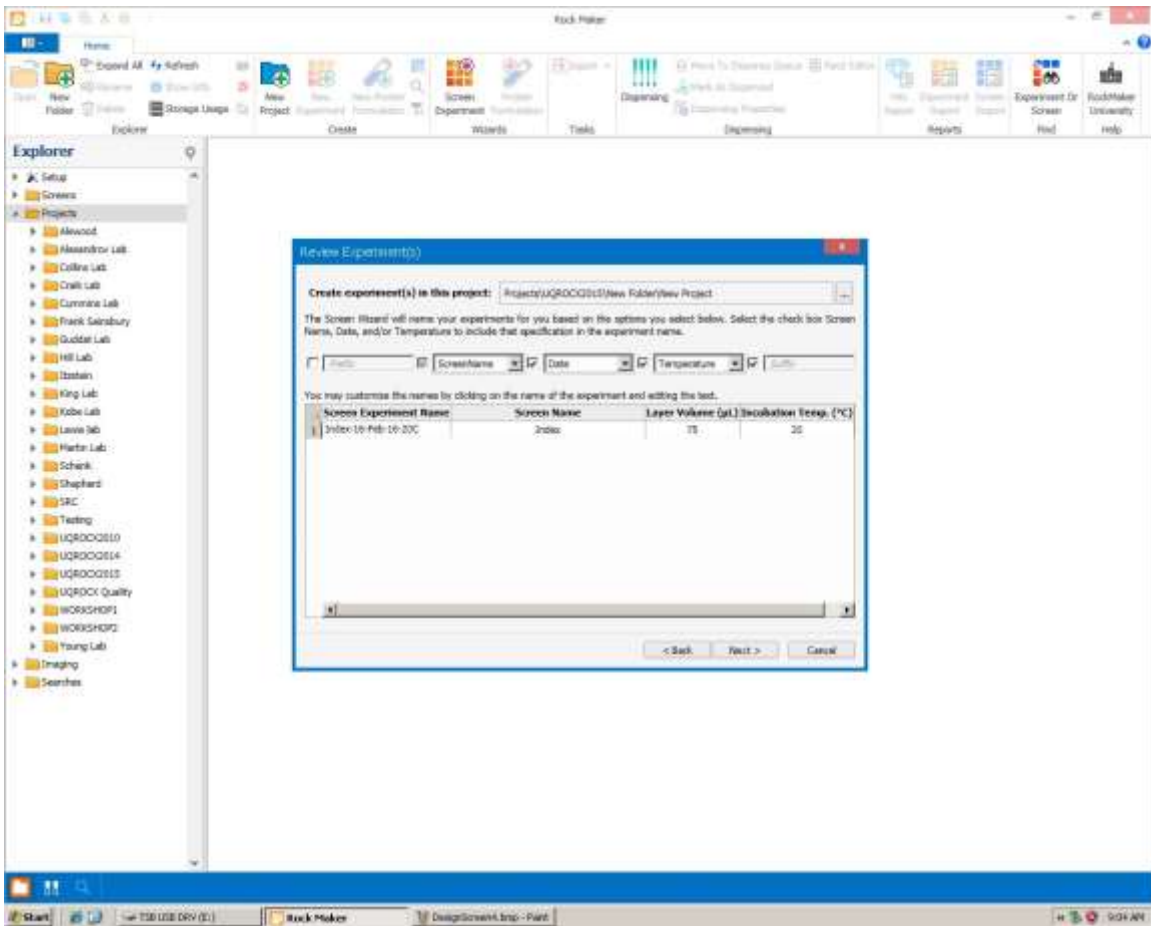
From your Project Folder select the Protein formulation you will be using



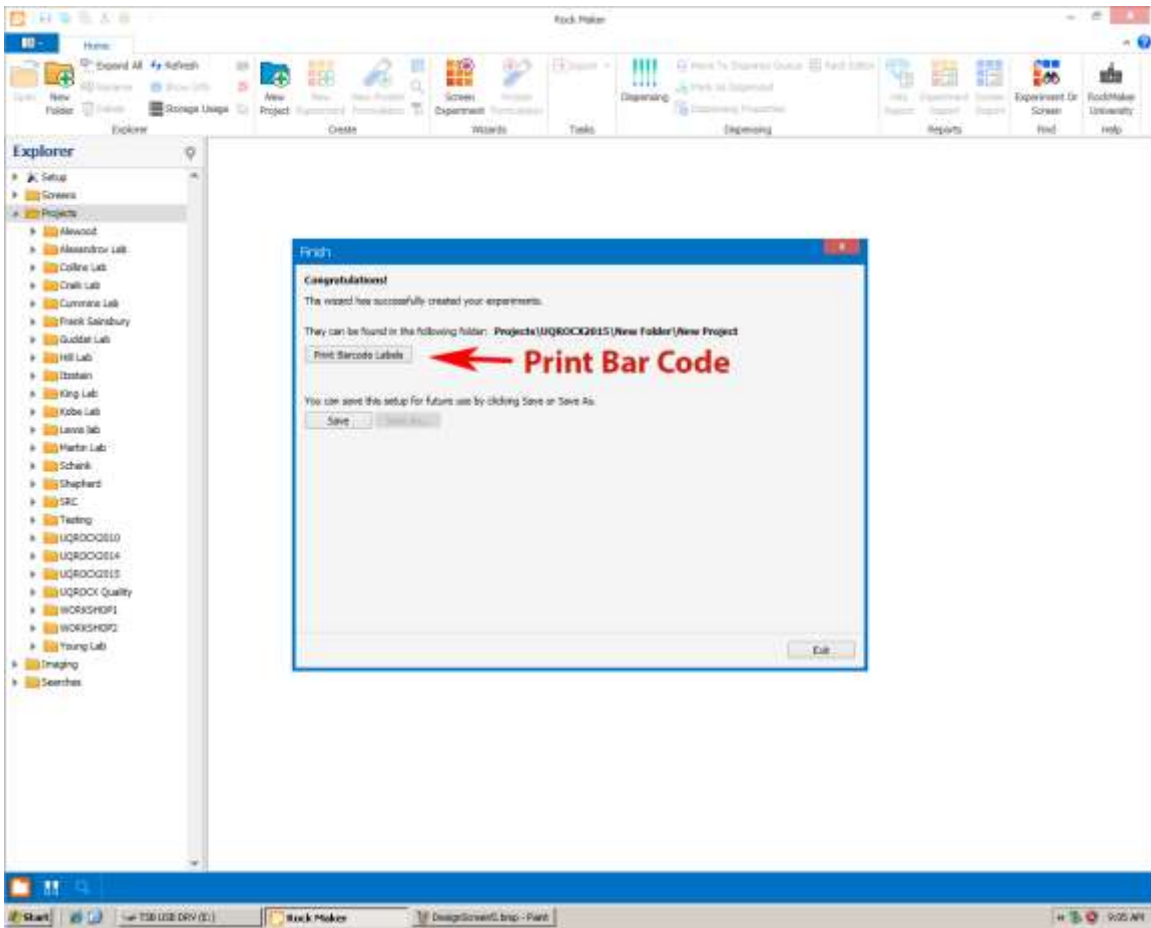
Select the screening schedule you want.



Select the name you want for your experiment

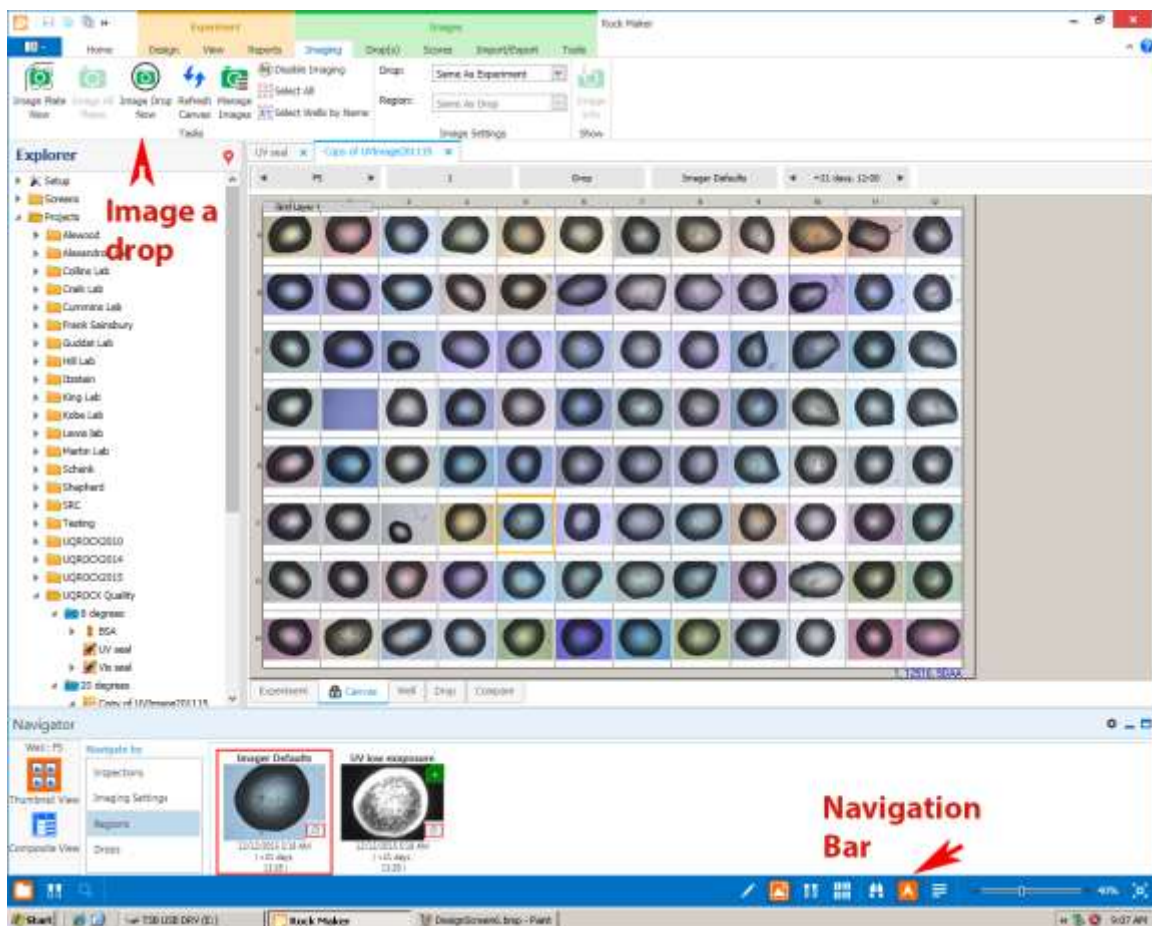


Print the Bar Code and exit.



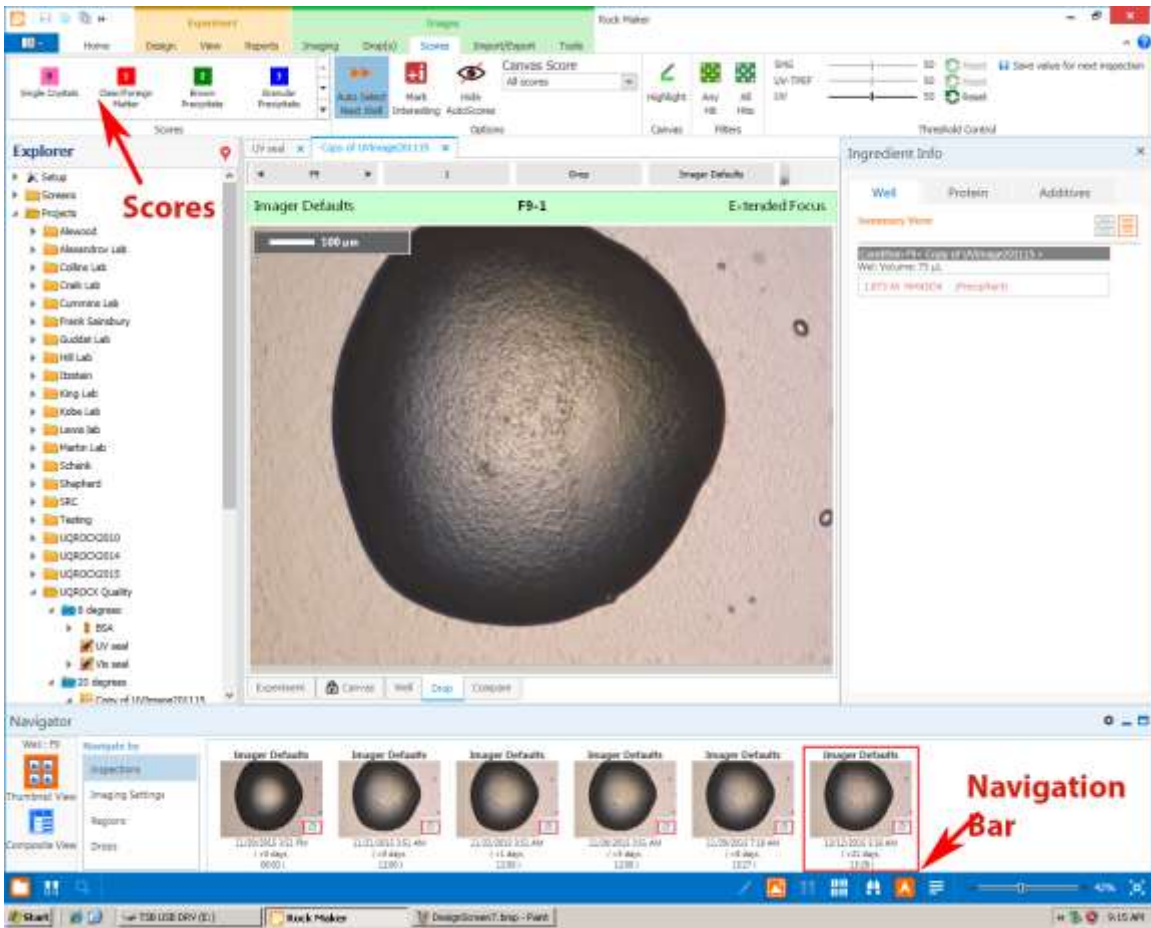
Inspecting and Scoring

Your images should be available for inspection a scoring about 20 minutes after imaging. Available images will appear on the Canvas tab when you click on the experiment icon (ie open the experiment).



You can view each drop in large format by clicking on the drop, and you can see the imaging history of the drop by toggling the **Navigation Bar** icon.

You can score the drop and automatically move to the next drop as you do your score..



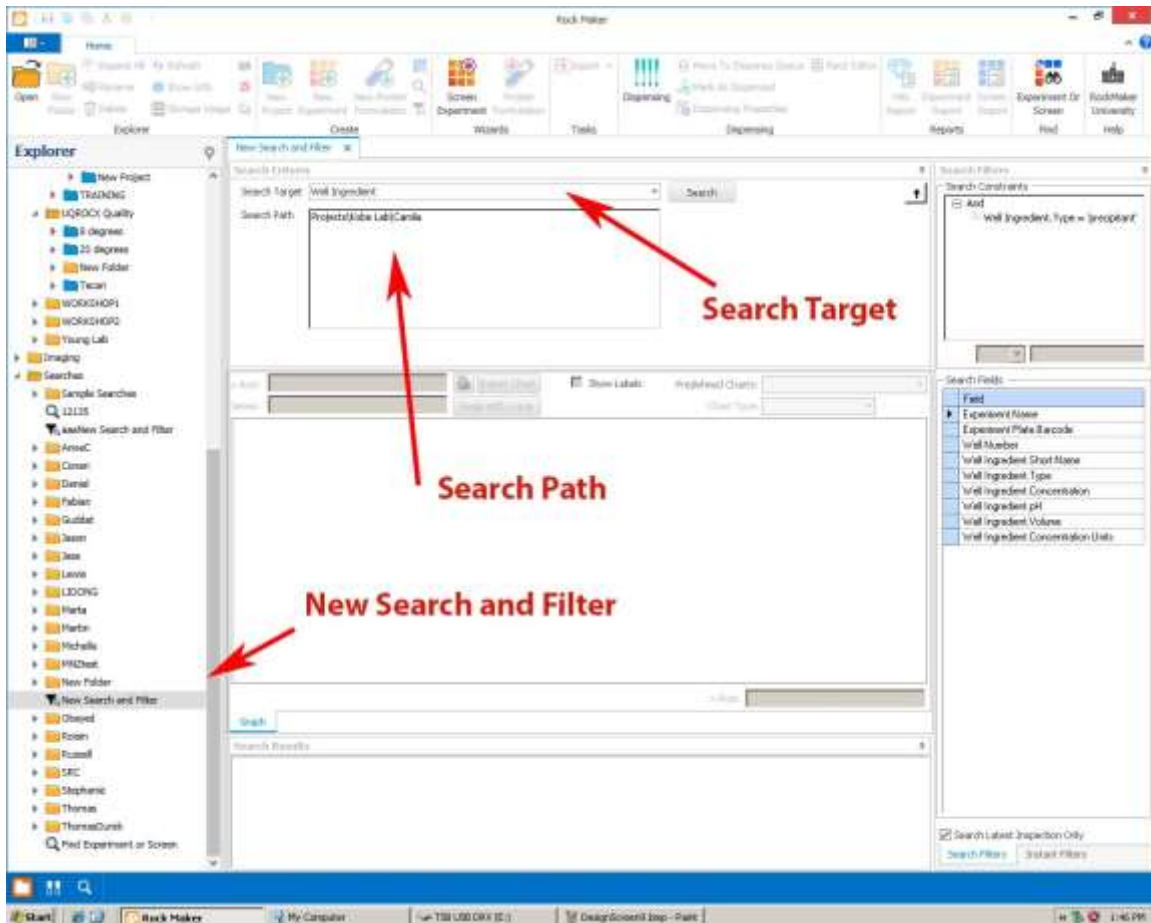
Analysing condition screening experiment outcomes

You can analyse the results of an experiment or a set of experiments by selecting **New Search and Filter** on the left-hand Explorer window.

A panel will open in which you can design your search.

Search Target: there are a number of search targets but **Well Drop** and **Well Ingredient** are the ones I use most often. Select your target from the drop down menu.

Search path: defines the experiments you will search. Drag and drop your search path.

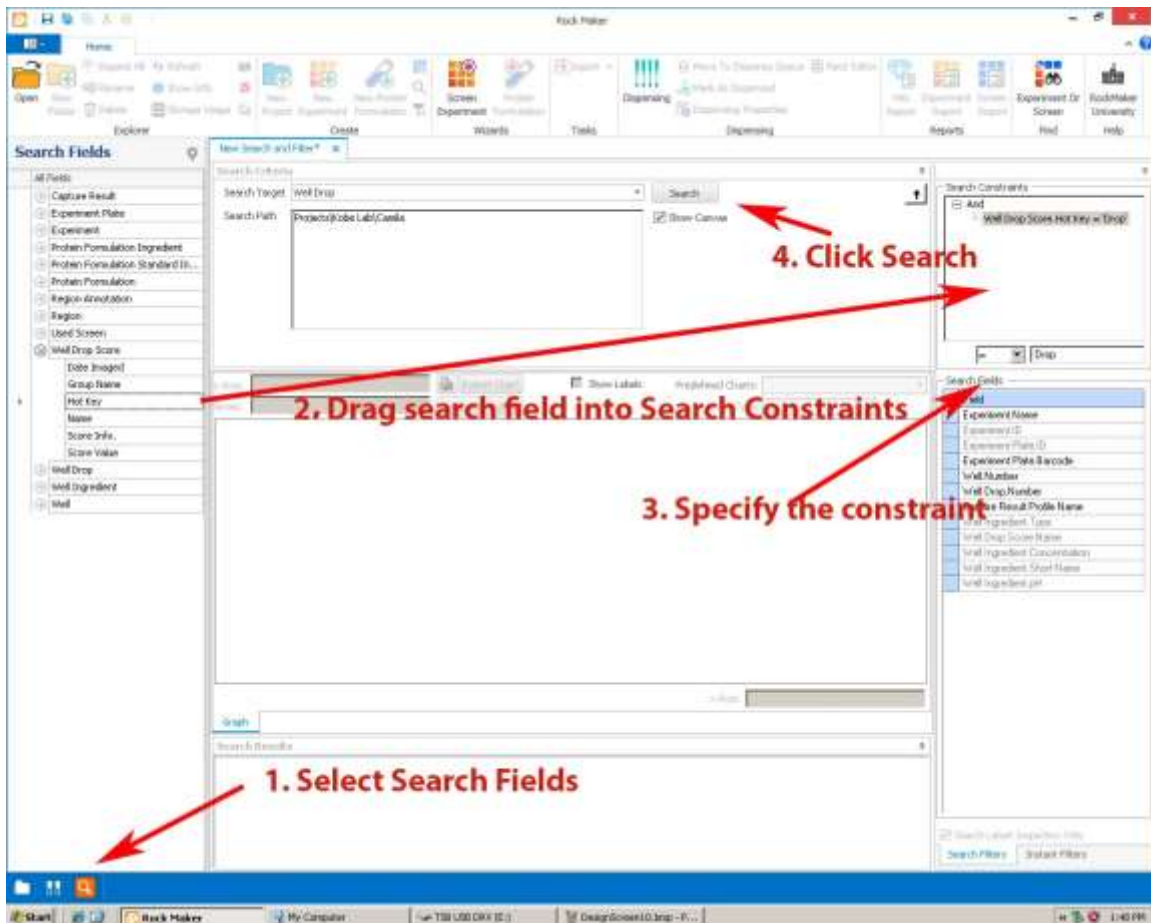


Now you want to define the Search Fields and place specific constraints.

On the navigation bar at the bottom left click the **Select Search Fields** icon.

From the **Search Fields** window open the tree and drag and drop the field into the **Search Constraints** window. I often use Score.

Set the Score value/s you want to extract and click **Search**



Your search will take a few minutes and will give you a list of drops that meet the search criteria. You can export this list, open the experiment and view the drops and save the search in your own Search directory.